

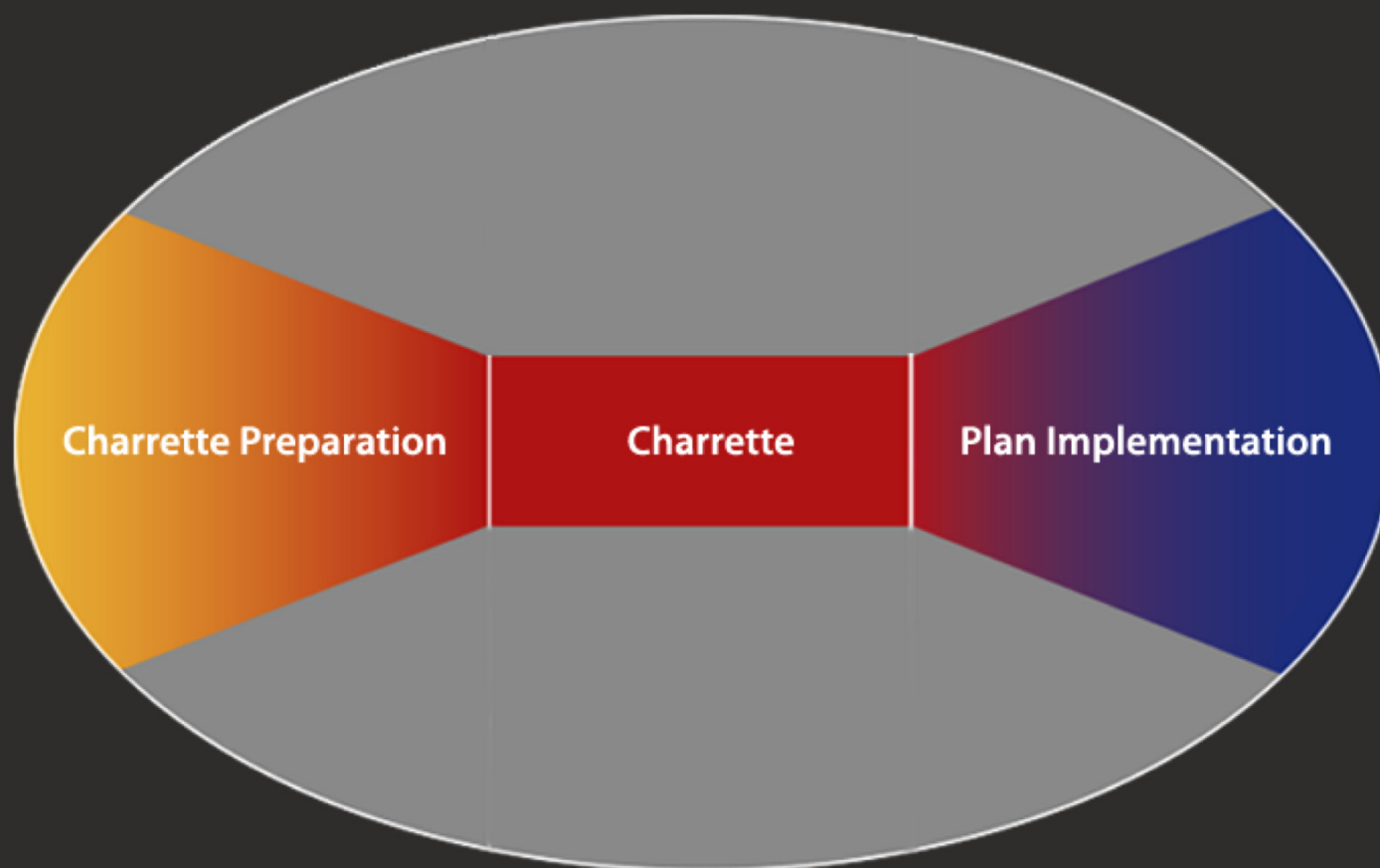
NCICharretteSystem

The Breakthrough Planning Tool for Community Transformation

The National Charrette Institute

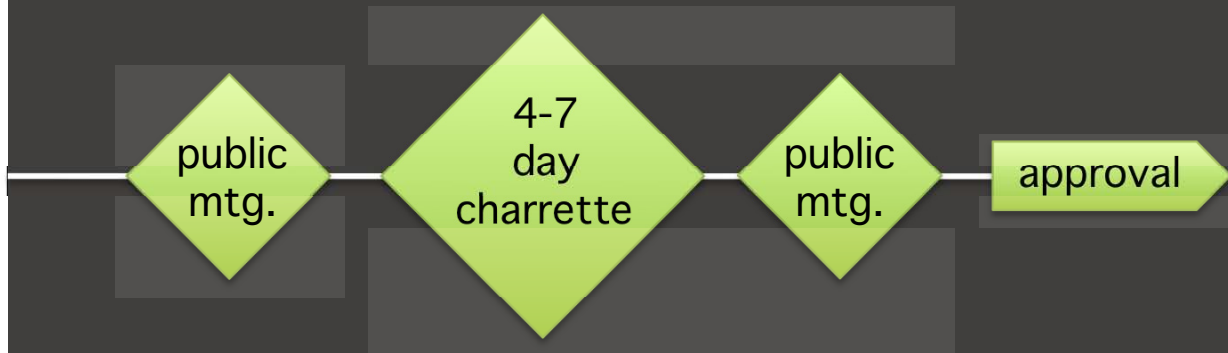
- The National Charrette Institute (NCI) is an IRS 501(c)(3) nonprofit educational institution
- We teach professionals and community leaders the NCI Charrette System™, a design-based, accelerated, collaborative project management system that harnesses the talents and energies of all interested parties to create and support a feasible plan
- We advance the fields of community planning and public involvement through research, publications and facilitation

The NCI Charrette System

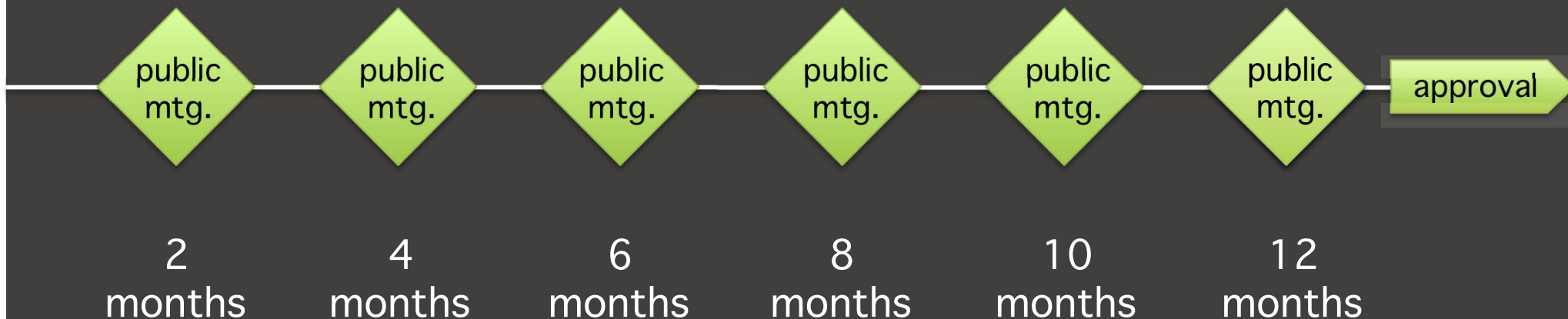


NCI Charrette System saves time, money

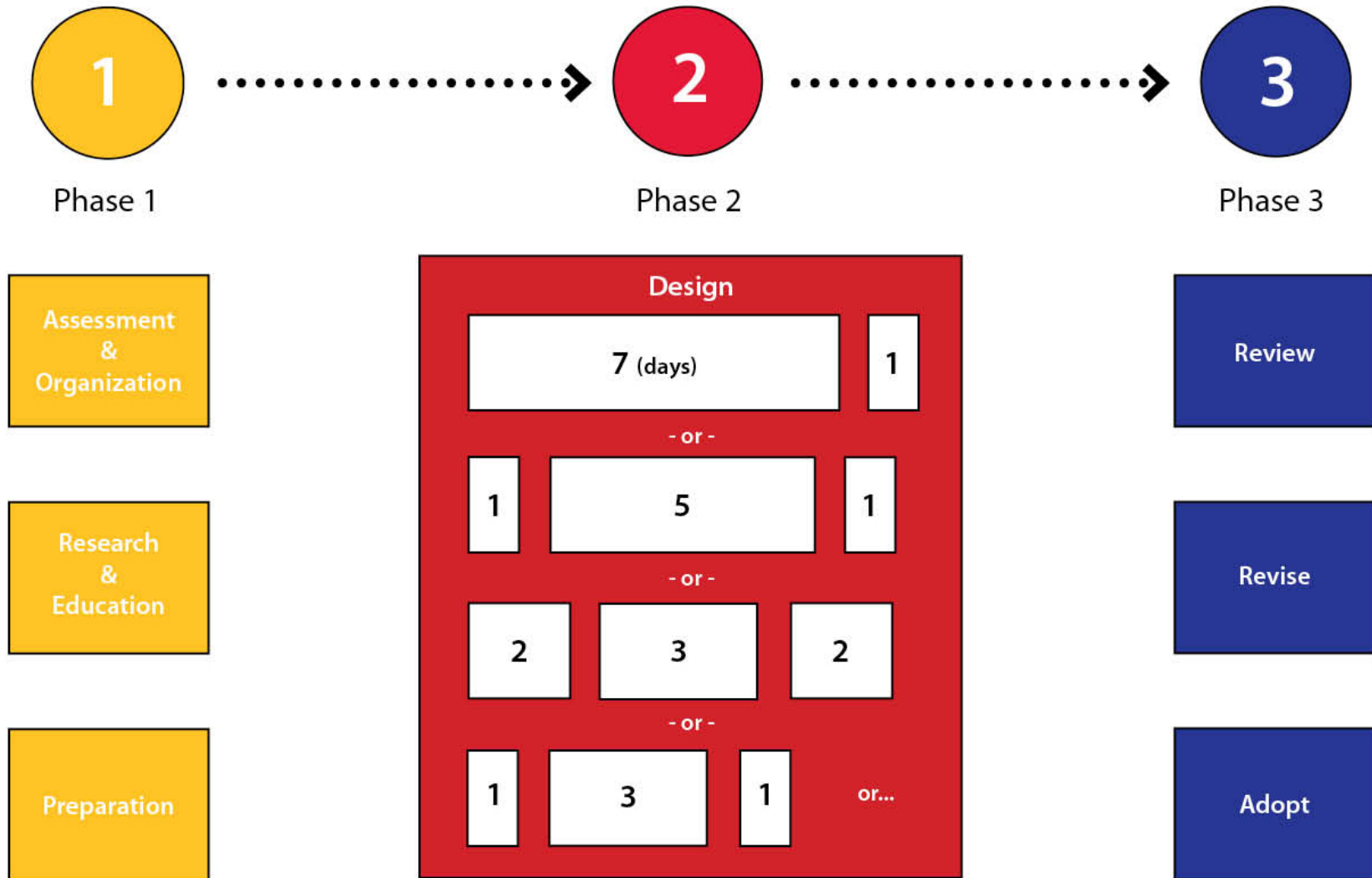
NCI Charrette System



Conventional Planning Process

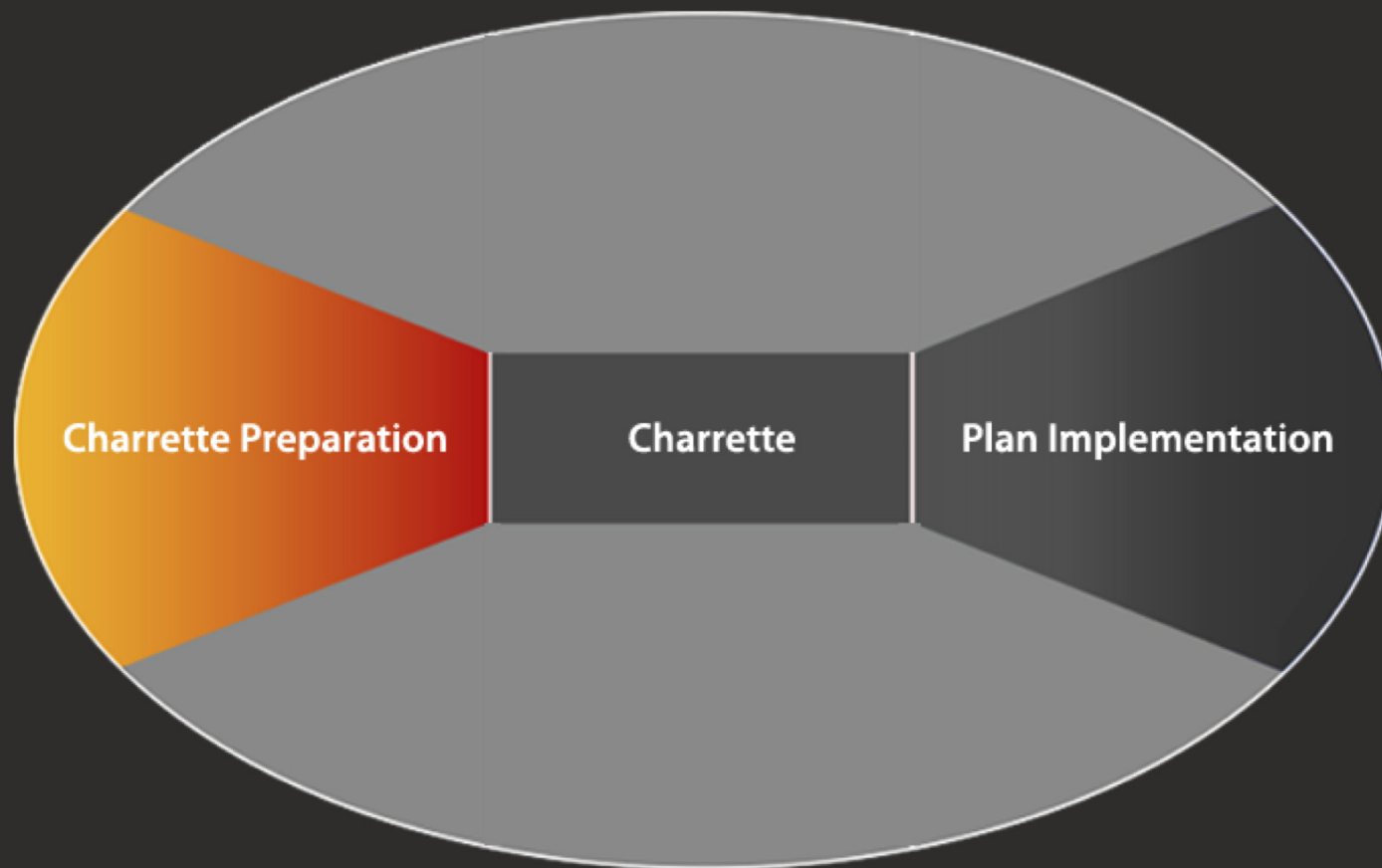


NCI Collaborative Design System

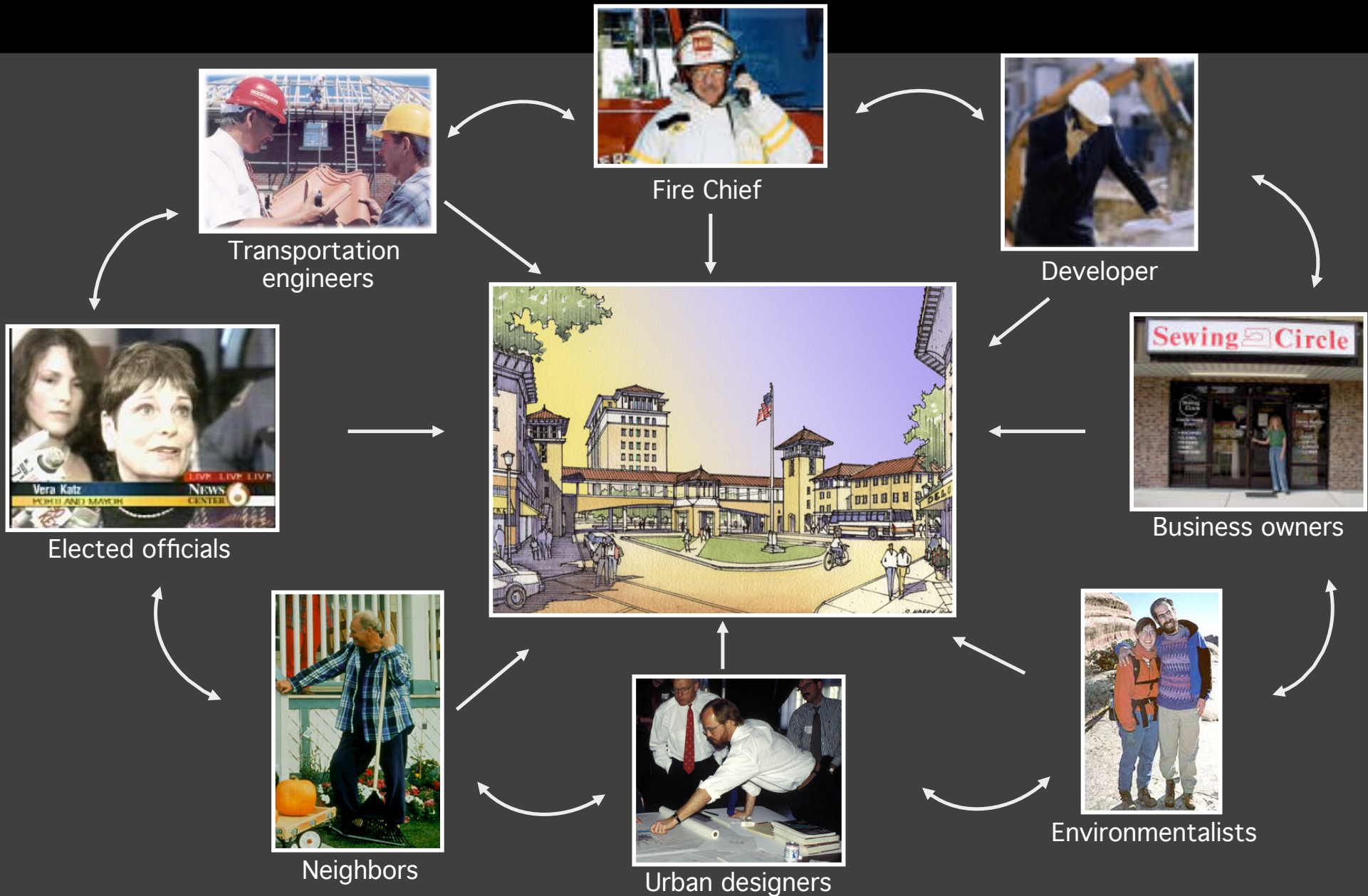


The NCI Charrette System

Phase One: Charrette Preparation



Stakeholders' unique contributions



Sample Stakeholder Analysis

Viewpoint	Person / Affiliation	Issues	Win	Level	Outreach Strategy	Charrette Participation
Elected Official	Lucinda Wallis, Capital County	25 years of controversy, with nothing to show. Wallis is the project "champion."	A plan and codes agreed upon by the developer, and the neighborhood. A bulletproof public process. A national exemplar project.	Primary	Email, phone	Daily Team Meetings
Elected Official	Percival Moccasin, Capital County	Concerned about project costs. Interested in a non-controversial outcome.	A project that can be approved and supported by neighbors.	Primary	Email, phone	Public Meetings
Neighborhood Activists	Carrie Snodgras, Kris Tal, Terry Jensen, Medford District Improvement Association	Deep distrust of County Supervisors and staff. Traffic, visual impacts, property values, safety.	Minimal traffic impacts, maximum housing, low buildings across from neighborhood, pedestrian access, local retail only, no increase in transit parking. The County must keep its promise and build the regional trail.	Secondary	Emails, letters	Separate Meeting
Neighboring Commercial Owners	Katrina Moskowitz, Hollywood Boosters	Workers have limited local services.	Compatible uses with existing business, amenities for office workers, traffic management.	Secondary	Emails, letters	Separate Meeting
Developer	Tom Bates, Dick Bernard, Big Sky Development	Last development proposal failed.	Economic and market feasible plan.	Primary	Email, phone	Daily Team Meetings and Reviews

Charrette System Road Map

Phase/Activity	Phase 1 – Research, Education, Charrette Preparation				Phase 2 Charrette	Phase 3 – Plan Implementation			
	month 1	month 2	month 3	month 4	month 5	month 6	month 7	month 8	month 9
Project Management Team Meeting	●		●			●			
Guiding Principles	■	■							
Stakeholder Outreach	■					■			
Base Data Research and Analysis	■								
Public Kick-off Meeting		▲							
Stakeholder Interviews		■							
Educational Events				◆◆					
Pre-charrette Project Brief				◆					
Charrette					▲ 4-7				
Product Refinement						■			
Follow-up Project Public Meetings						▲ 2	▲ 1		
Approvals									◆

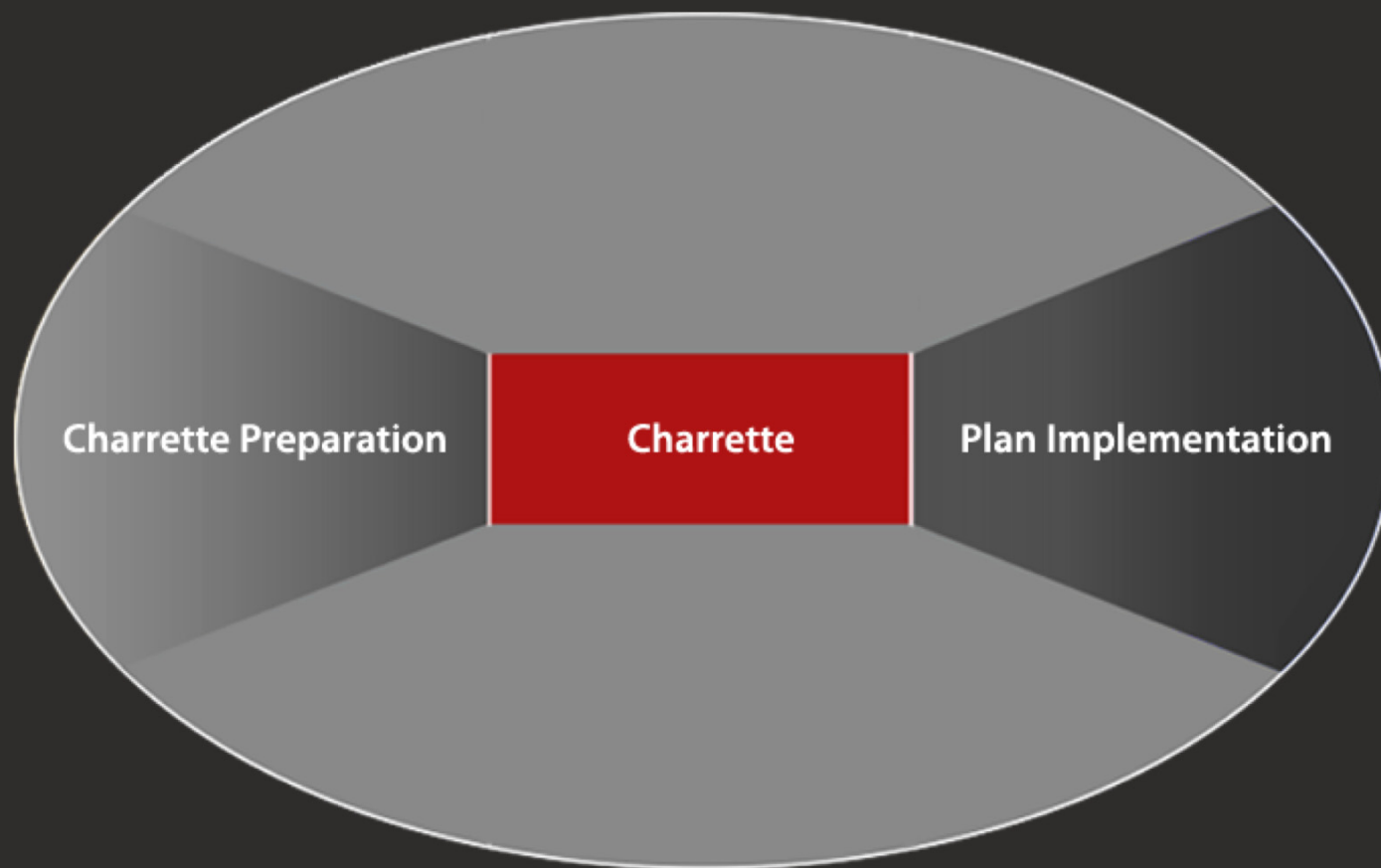
● in-house meeting

■ ongoing task

◆ deliverable/benchmark

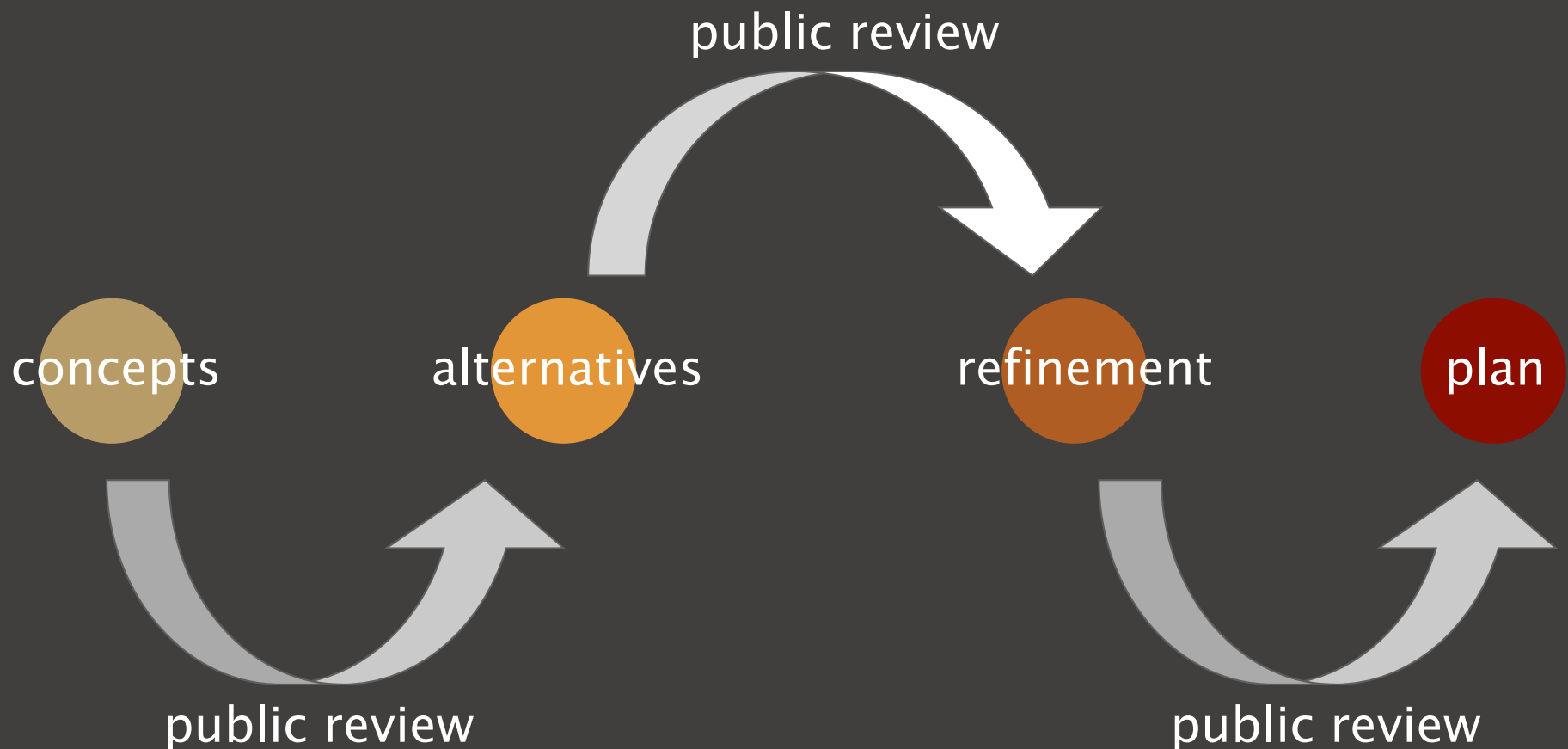
▲ public meeting

The Charrette



Charrette Feedback Cycles

Participants work in a series of short feedback loops



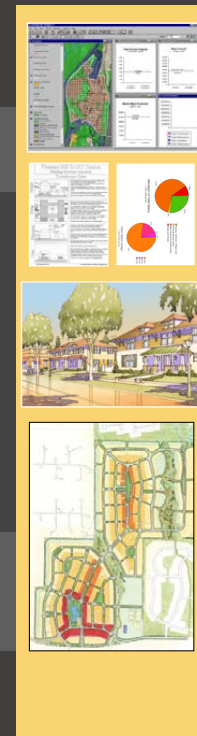
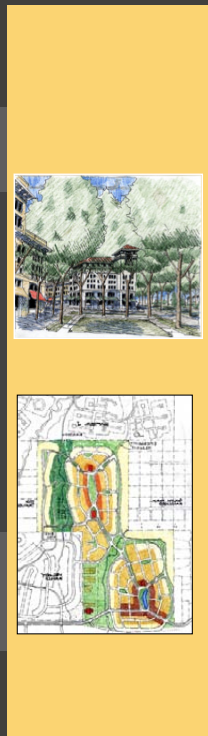
Charrette Work Cycles

public meeting
vision

public meeting
review

open house
review

public meeting
confirmation



alternative
concepts

preferred
plan

plan
development

Charrette Public Meeting #1: Hands-on Exercise

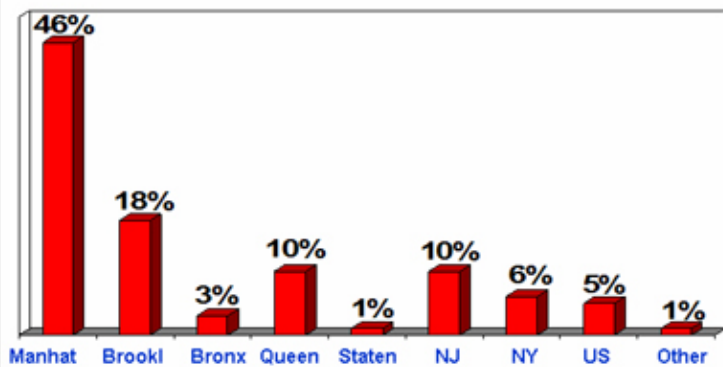
- Groups work on visioning exercises at tables



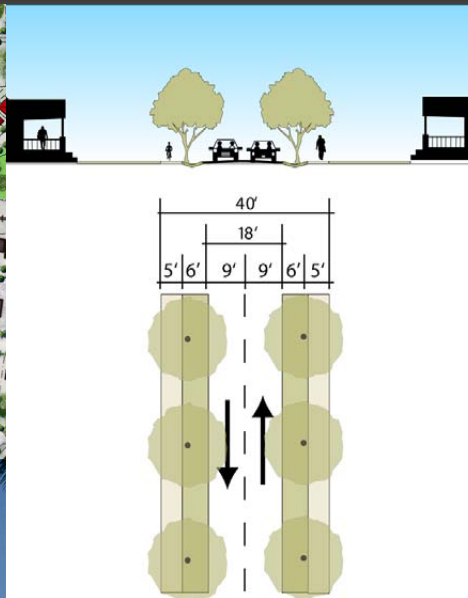
Charrette Public Meeting #1: Hands-on Exercise



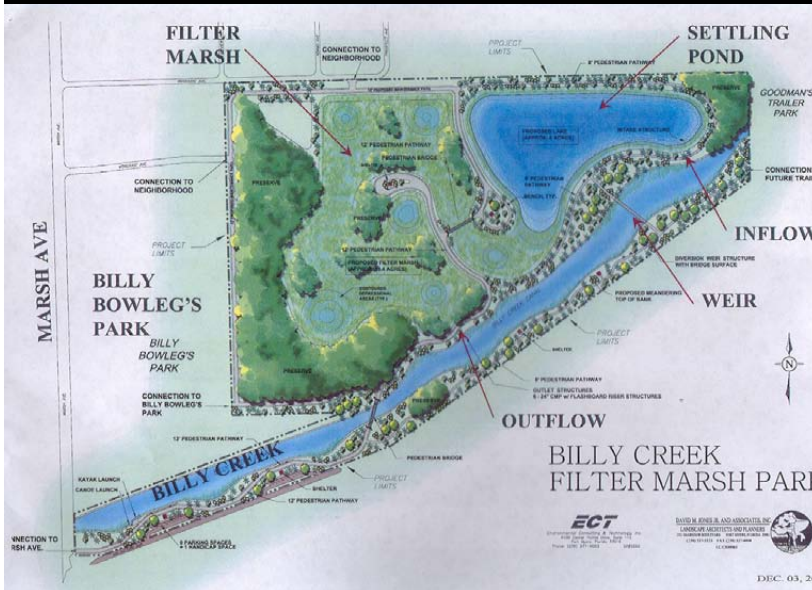
Where do you live?



Charrettes Produce Feasible Detailed Solutions



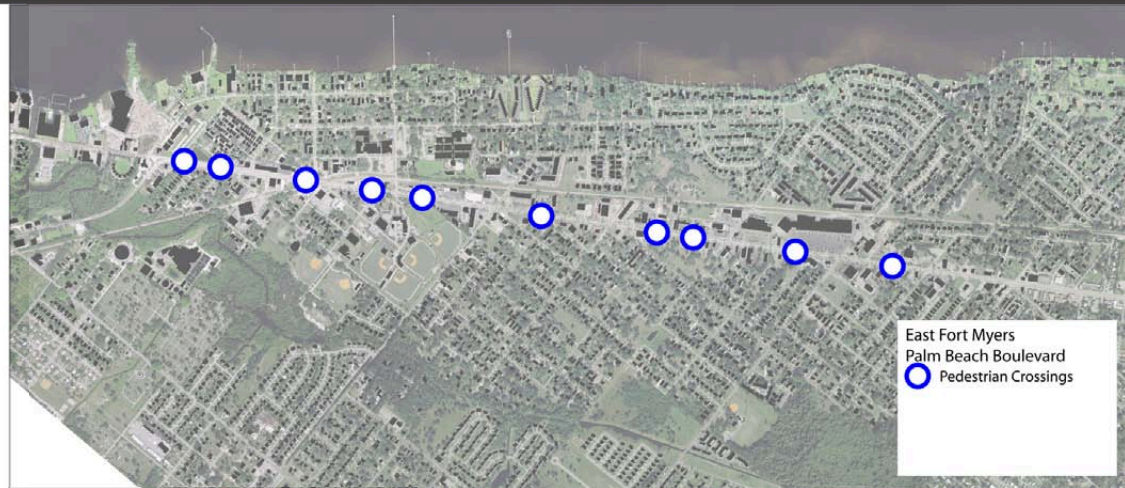
Charrettes Produce Feasible Detailed Solutions



Charrettes Produce Feasible Detailed Solutions

Minimum Width of Median for "U" Turn on 4 Lane Road

Measure in feet	Passenger P	Single Unit SU	Semi Trailer WB-50
	42	75	83
	30	63	71
	20	53	61



Arterial Level of Service Palm Beach Blvd

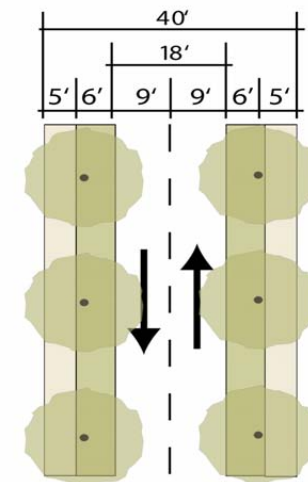
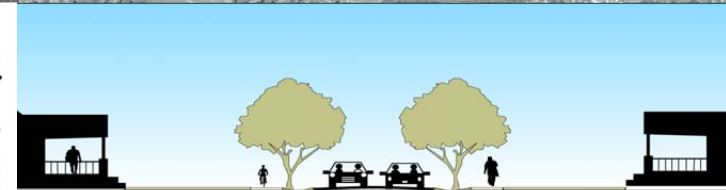
6/12/2008

Arterial Level of Service: EB Palm Beach Blvd

Cross Street	Arterial Class	Flow Speed	Running Time	Signal Delay	Travel Time (s)	Dist (mi)	Arterial Speed	Arterial LOS
Veronica Shoemaker B	II	45	67.6	8.9	76.5	0.84	39.8	A
Oleander	II	45	56.3	16.7	73.0	0.70	34.7	B
Marsh St	II	45	18.4	2.4	20.8	0.17	29.2	B
New York Dr	II	45	39.8	7.0	46.8	0.42	32.5	B
Total	II		182.1	35.0	217.1	2.14	35.5	A

Arterial Level of Service: WB Palm Beach Blvd

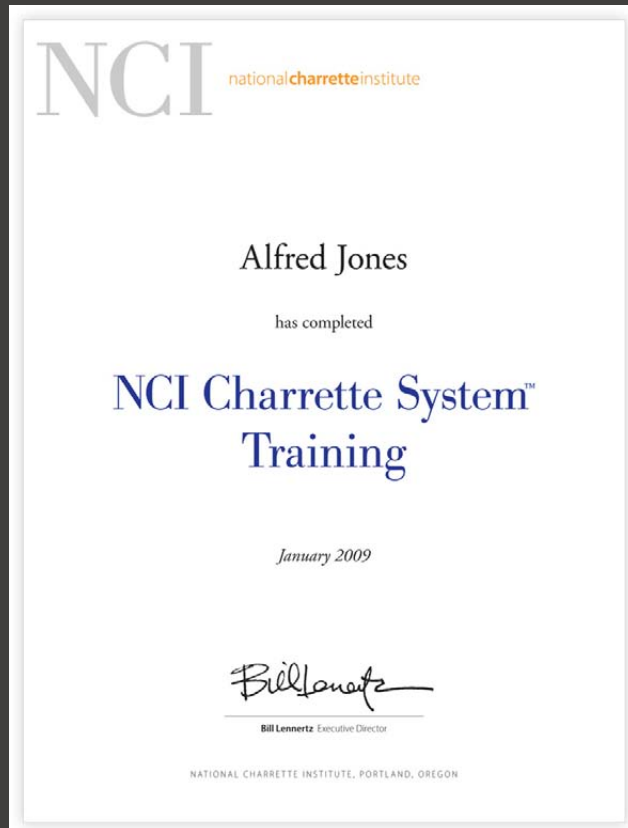
Cross Street	Arterial Class	Flow Speed	Running Time	Signal Delay	Travel Time (s)	Dist (mi)	Arterial Speed	Arterial LOS
New York Dr	II	45	42.5	5.6	48.1	0.47	34.9	B
Marsh St	II	45	39.8	4.2	44.0	0.42	34.6	B
Oleander	II	45	18.4	11.7	30.1	0.17	20.2	D
Veronica Shoemaker B	II	45	56.3	7.4	63.7	0.70	39.8	A
Seaboard St	II	45	67.6	40.2	107.8	0.84	28.2	B
Total	II		224.6	69.1	293.7	2.61	32.0	B



NCI Charrette System

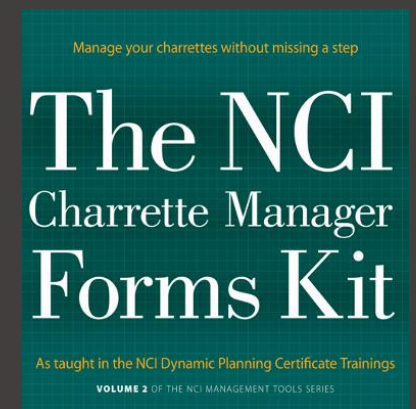
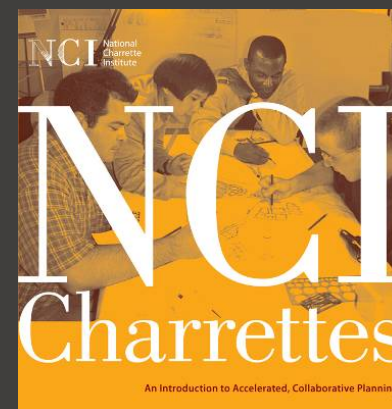
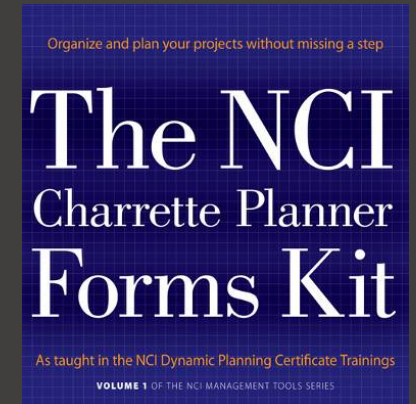
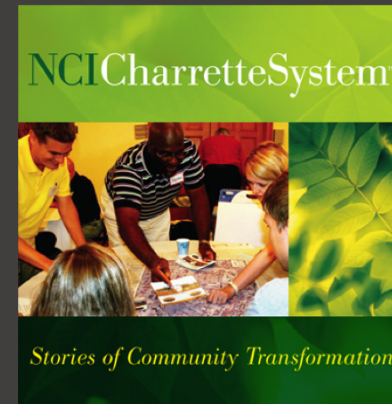
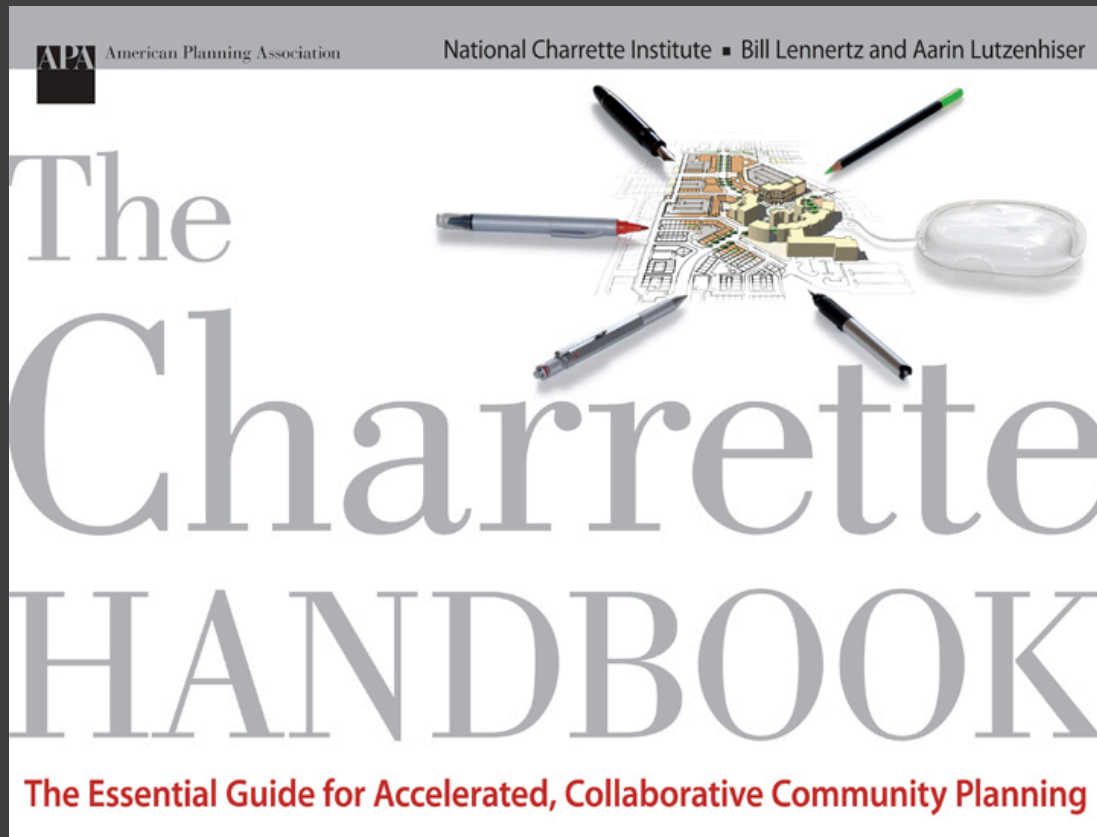
NCI Management & Facilitation

- Next up: Portland, March 19-23, D.C., June 4-8
- Also at Harvard, Vancouver , UK
- Also available on-site for your organization



NCI Educational Products

Available at: www.charretteinstitute.org



Charrette Request for Proposal Template

A complete framework for specifying a NCI charrette process in a RFP

1800 downloads to date

Free for download at:
charretteinstitute.org

NCI Charrette Request for Proposal (RFP) Template

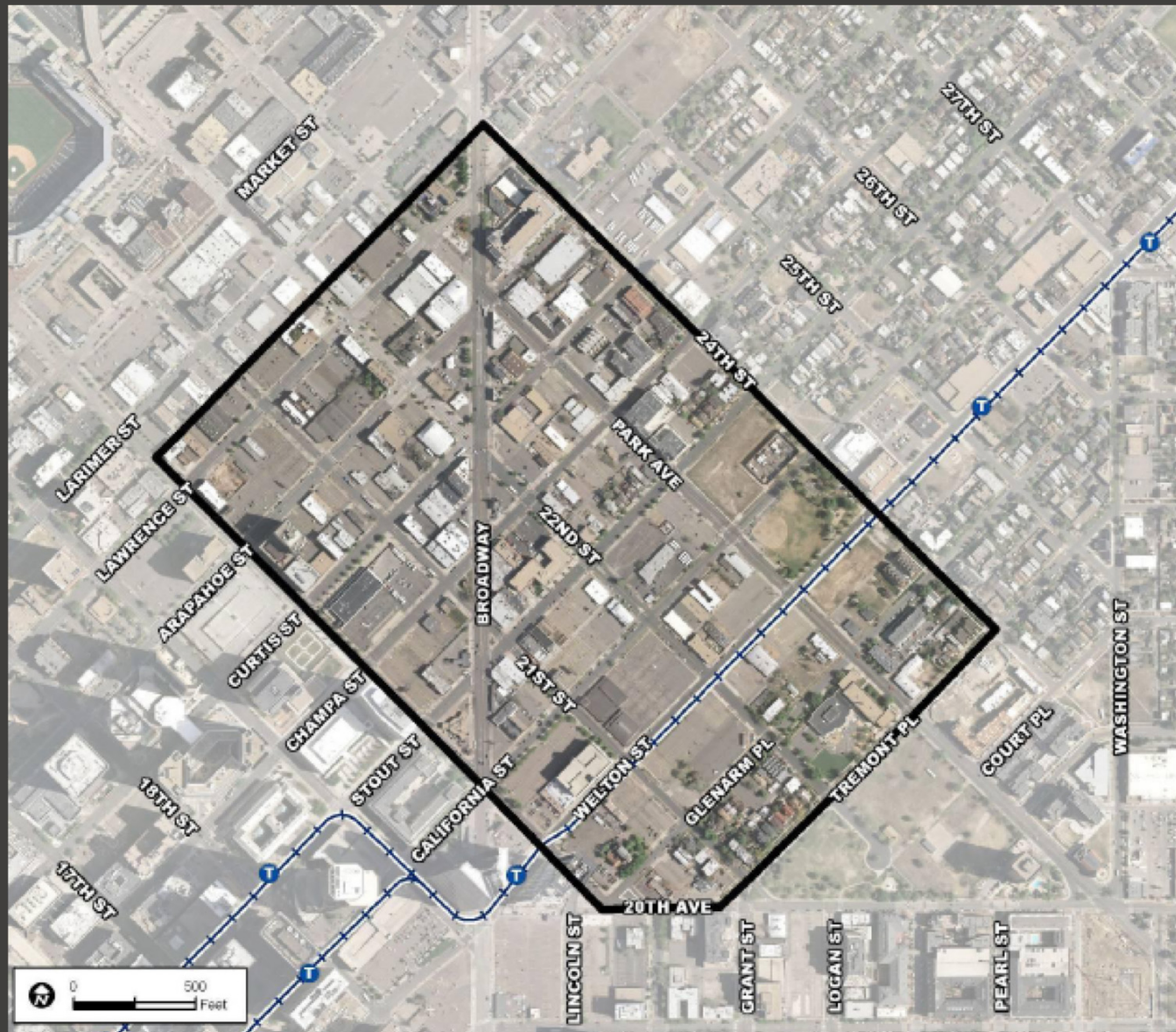
A complete framework for specifying a
NCI charrette process in a Request for Proposal

A free resource from the National Charrette Institute

This project was made possible through the support of InterCap Holdings

Charrette high-tech tools

Denver – Arapahoe Square Charrette



Site tour



Opening public meeting



Design team creates alternatives



Working group meetings



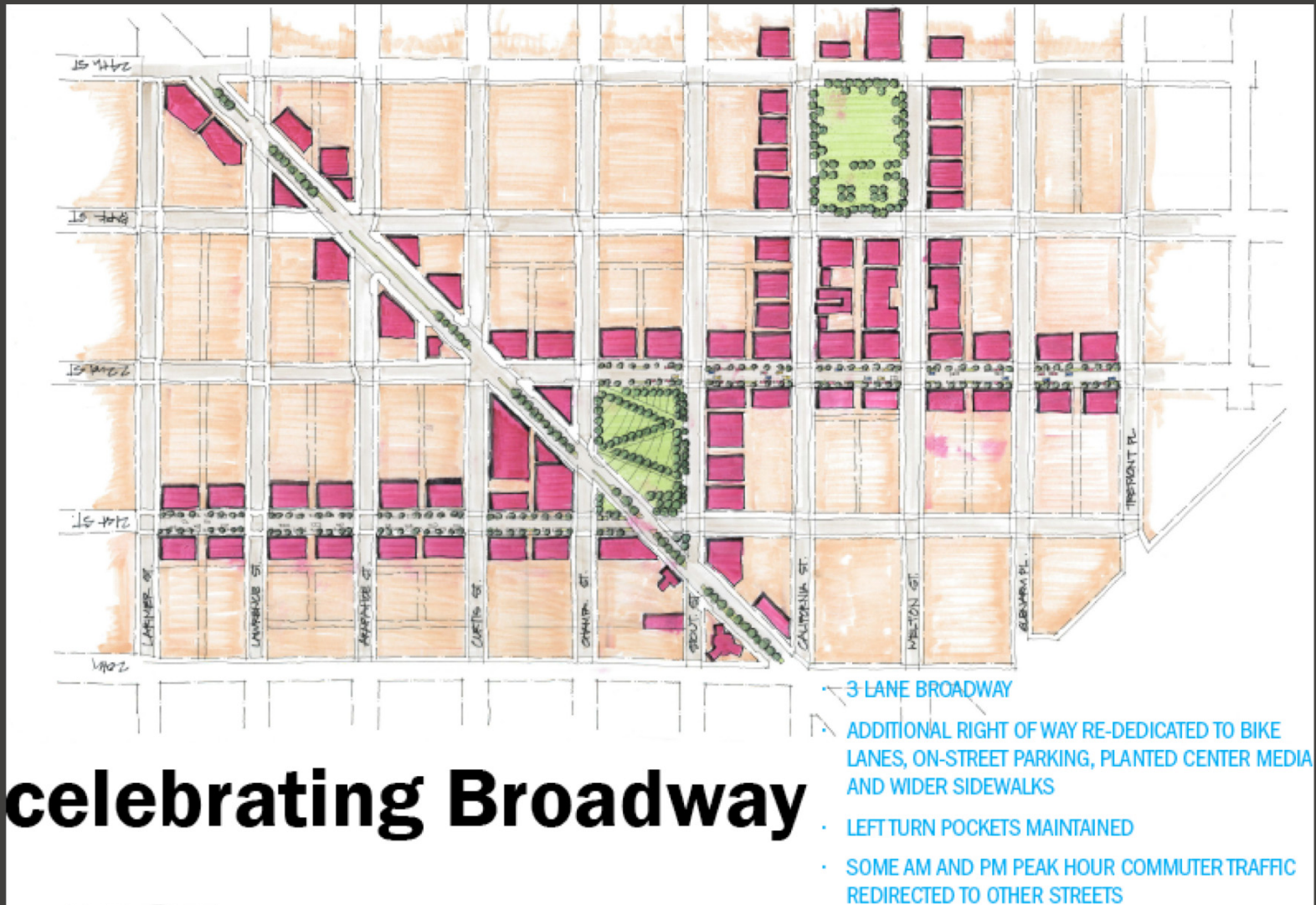
Public open house



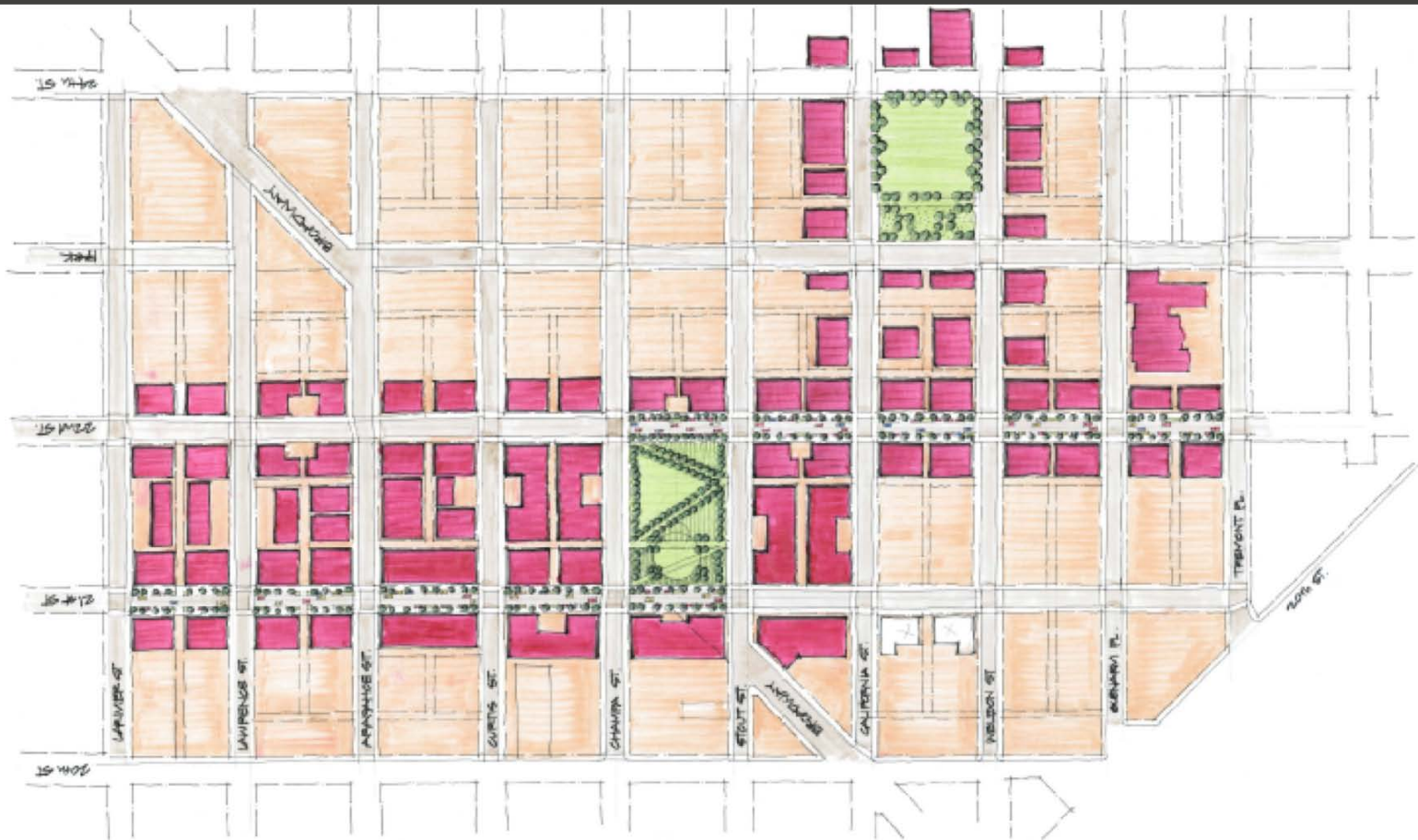
Presentation of plan alternative



Broadway Option A



Broadway – Option 2



“bridging” Broadway

- BROADWAY “BRIDGED” WITH A NEW NEIGHBORHOOD
- FIVE BLOCKS OF RESTORED GRID URBAN FABRIC
- SOME AM AND PM PEAK HOUR COMMUTER TRAFFIC REDIRECTED TO STOUT AND ARAPAHOE

Bridging Broadway

neighborhood park

- ACTIVE GROUND FLOOR RETAIL FACING PARK
- UPPER LEVEL LIVING SPACES, BALCONIES AND WINDOWS ORIENTED TOWARD PARK
- STREETS SURROUNDING PARK DESIGNED FOR LOW VOLUME, SLOW SPEED TRAFFIC
- PARK PROVIDES COMBINATION OF PLAZA AND GREEN SPACE



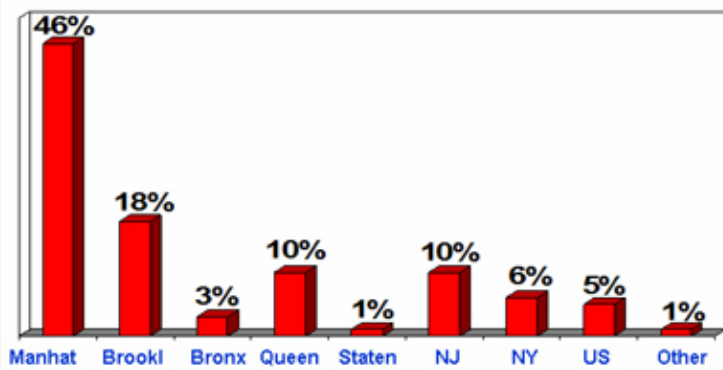
Table Discussions of alternatives



Keypad Polling



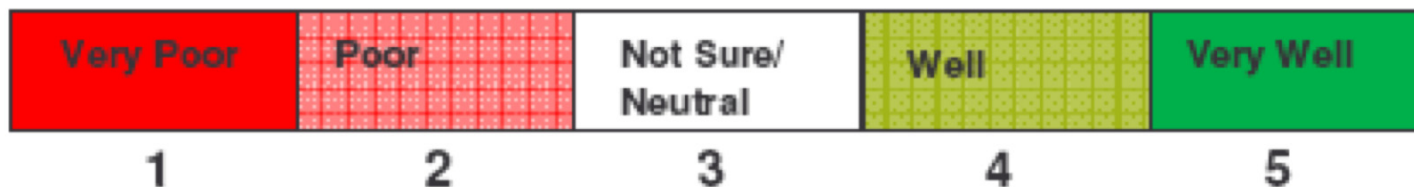
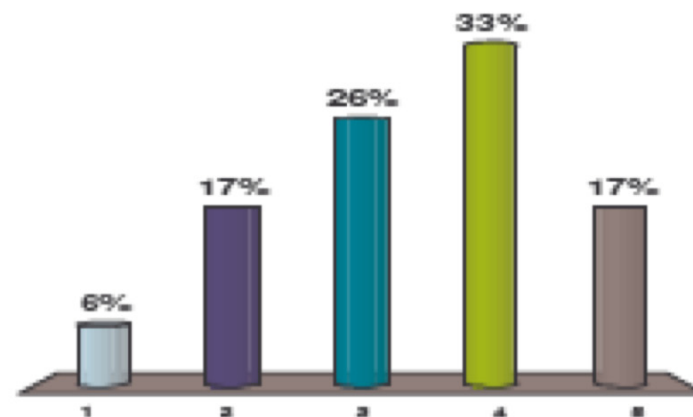
Where do you live?



Polling Design Performance

Celebrating Broadway

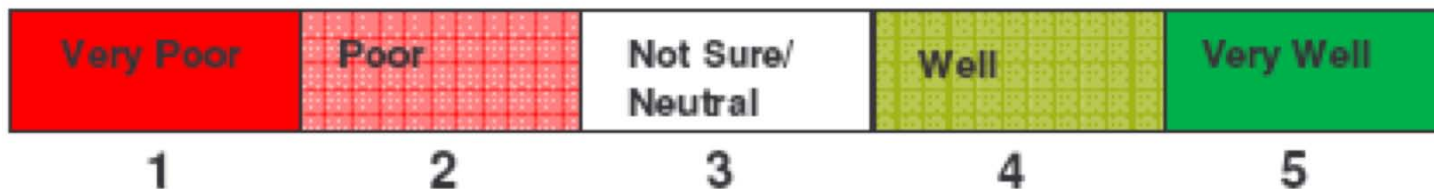
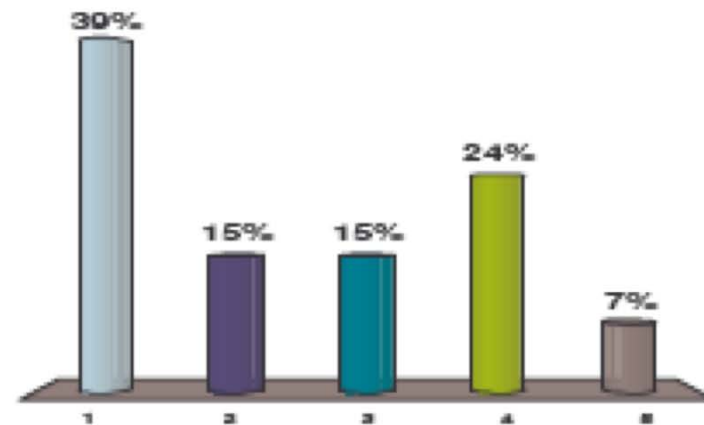
1. Auto mobility
2. Bike mobility
3. Transit mobility
4. Walkability
5. Development opportunity
6. Addressing Homelessness



Polling Design Performance

Bridging Broadway

1. Auto mobility
2. Bike mobility
3. Transit mobility
4. Walkability
5. Development opportunity
6. Addressing Homelessness



Polling Building Types



Neighborhood Edge



Polling Building Types

How appropriate is this scale for this zone?

1. Not at all appropriate
2. Not appropriate
3. Neutral
4. Appropriate
5. Very Appropriate

